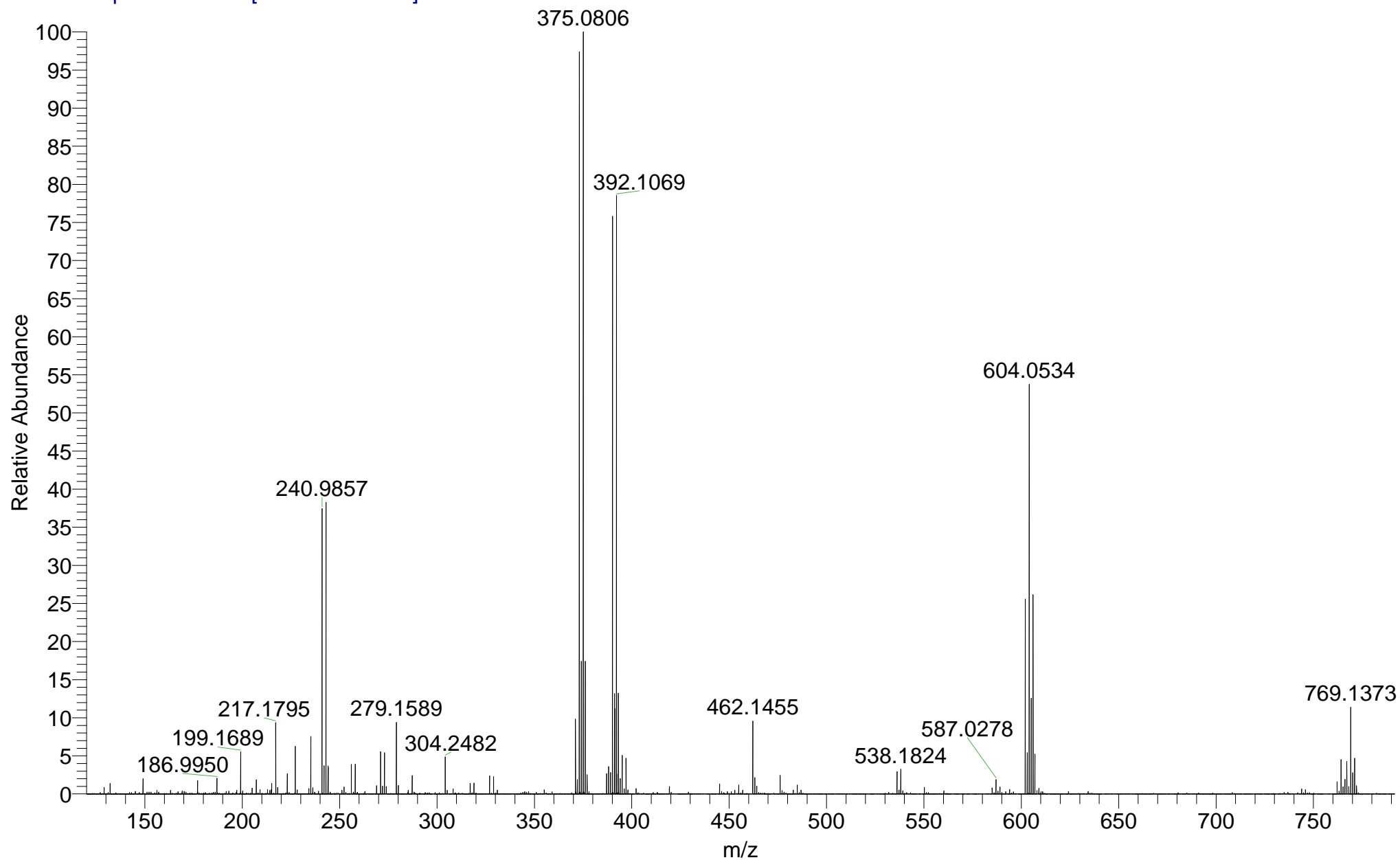


BATJAM_7LP4J_A #14-22 RT: 0.15-0.39 AV: 9 SM: 7G NL: 2.25E6
T: FTMS + p NSI Full ms [120.00-1935.00]

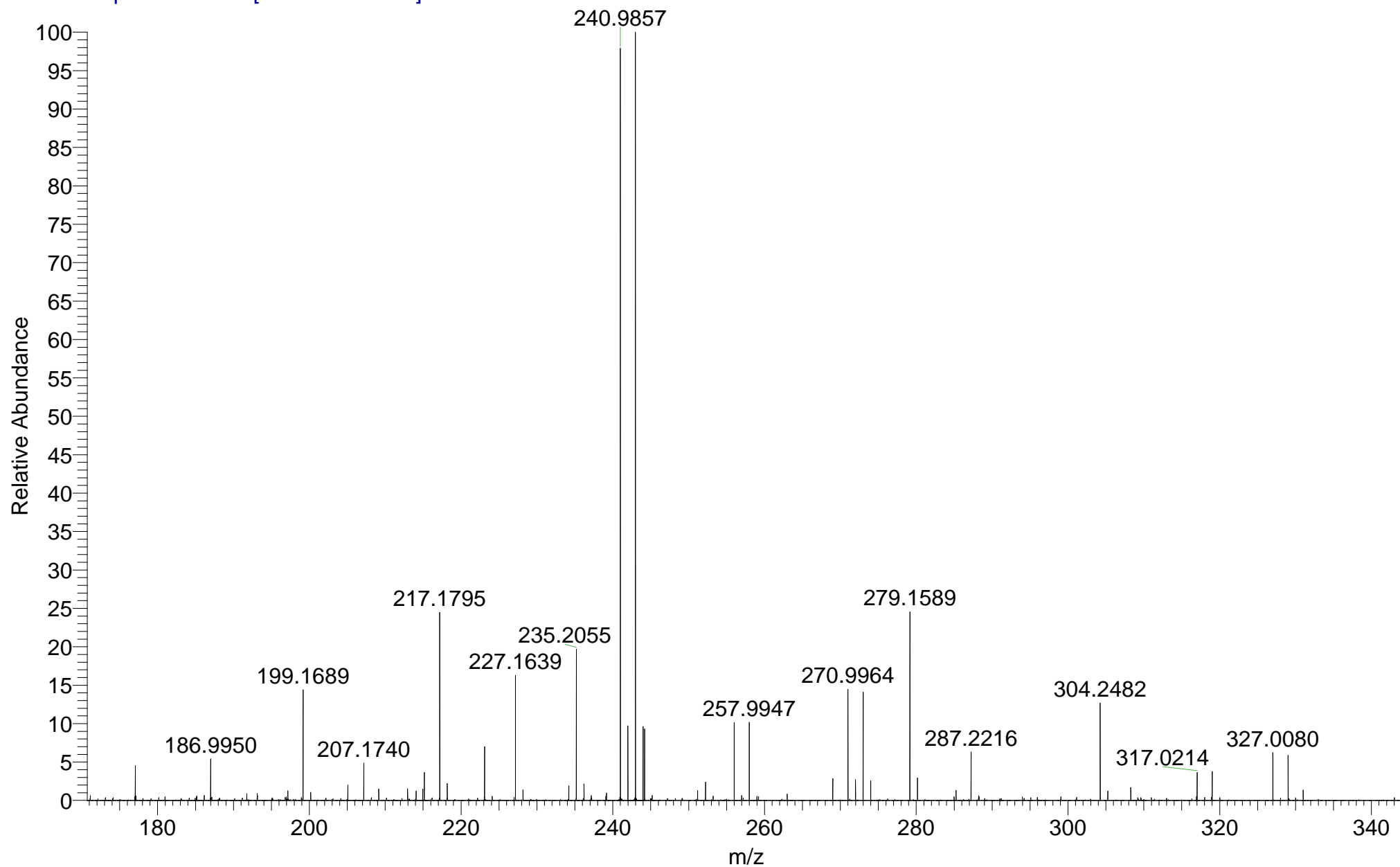


ACS644
(MeOH)/MeOH+NH4OAc
C16H25BrO3Si

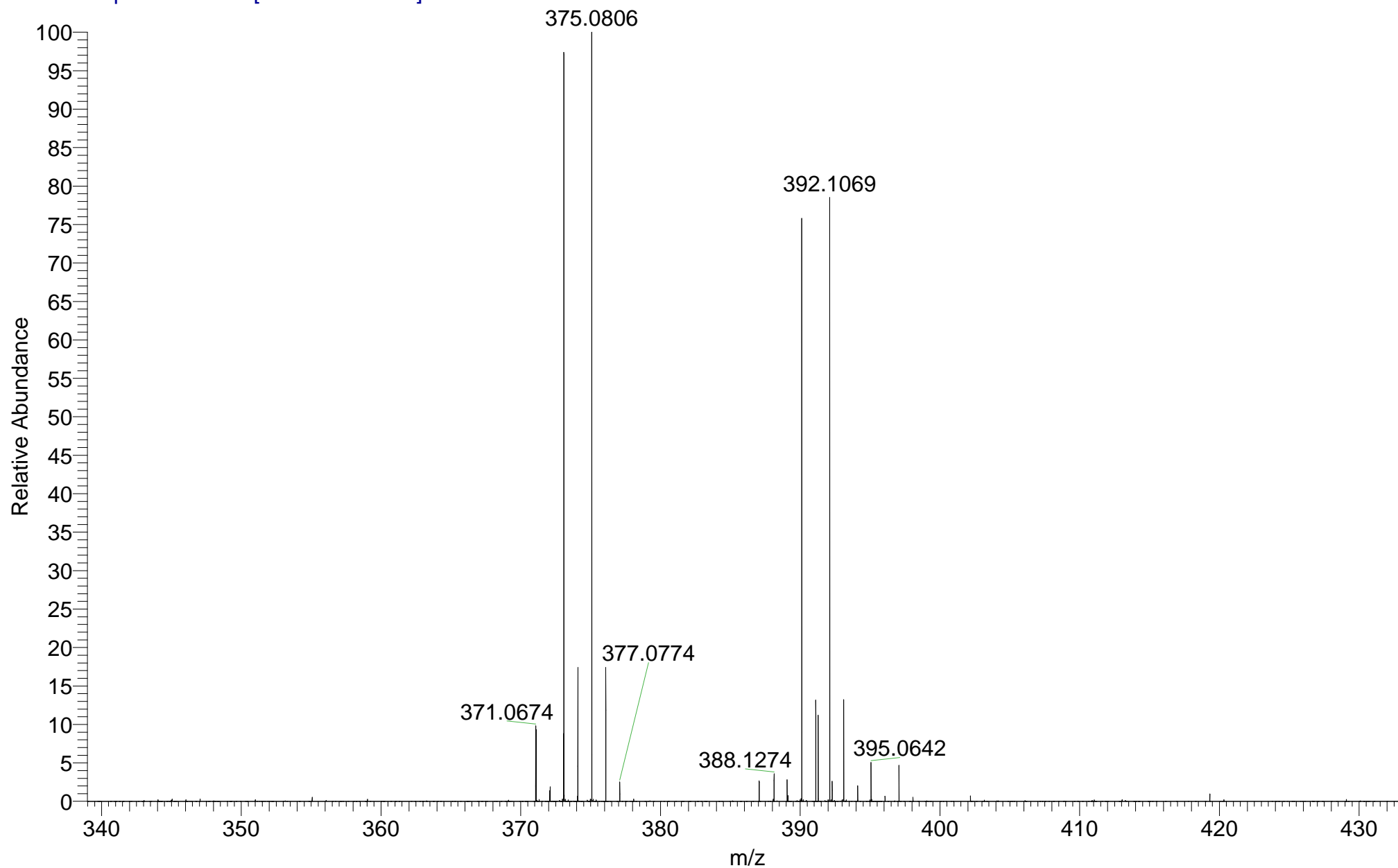
EPSRC National Facility Swansea
LTQ Orbitrap XL

BATJAM-AS
22/02/2017 15:36:22

BATJAM_7LP4J_A #14-22 RT: 0.15-0.39 AV: 9 SM: 7G NL: 8.61E5
T: FTMS + p NSI Full ms [120.00-1935.00]

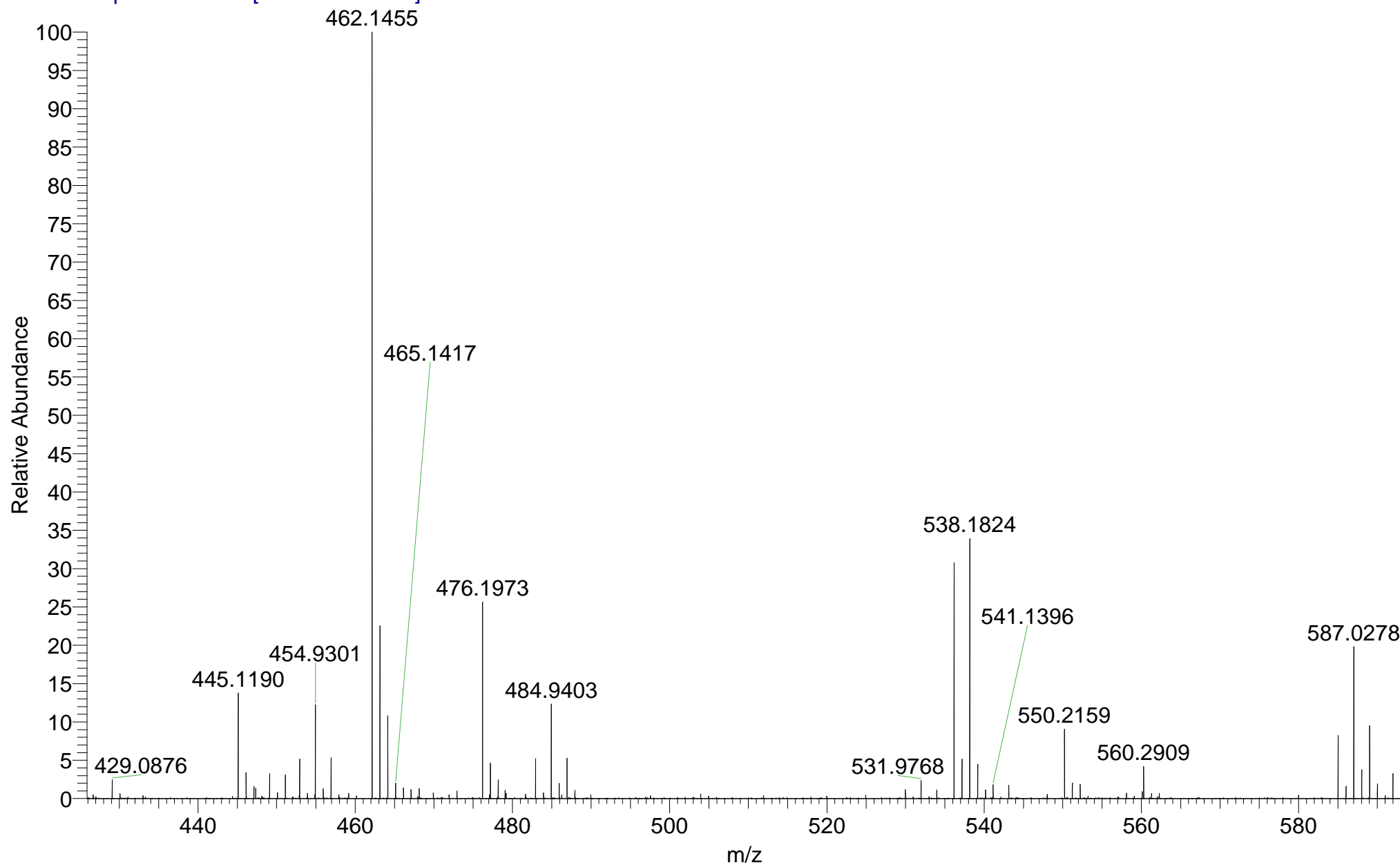


BATJAM_7LP4J_A #14-22 RT: 0.15-0.39 AV: 9 SM: 7G NL: 2.25E6
T: FTMS + p NSI Full ms [120.00-1935.00]



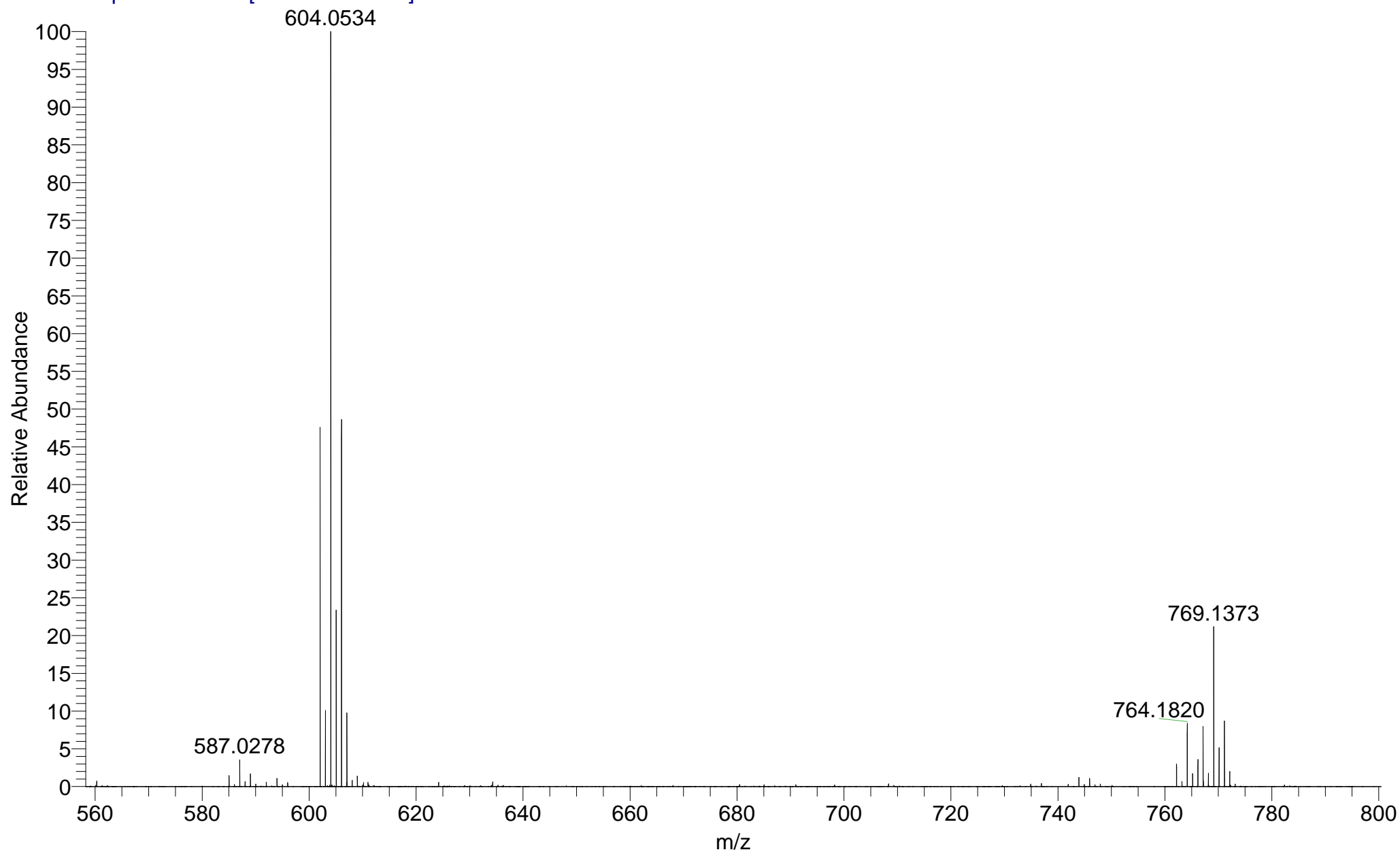
BATJAM_7LP4J_A #14-22 RT: 0.15-0.39 AV: 9 SM: 7G NL: 2.15E5

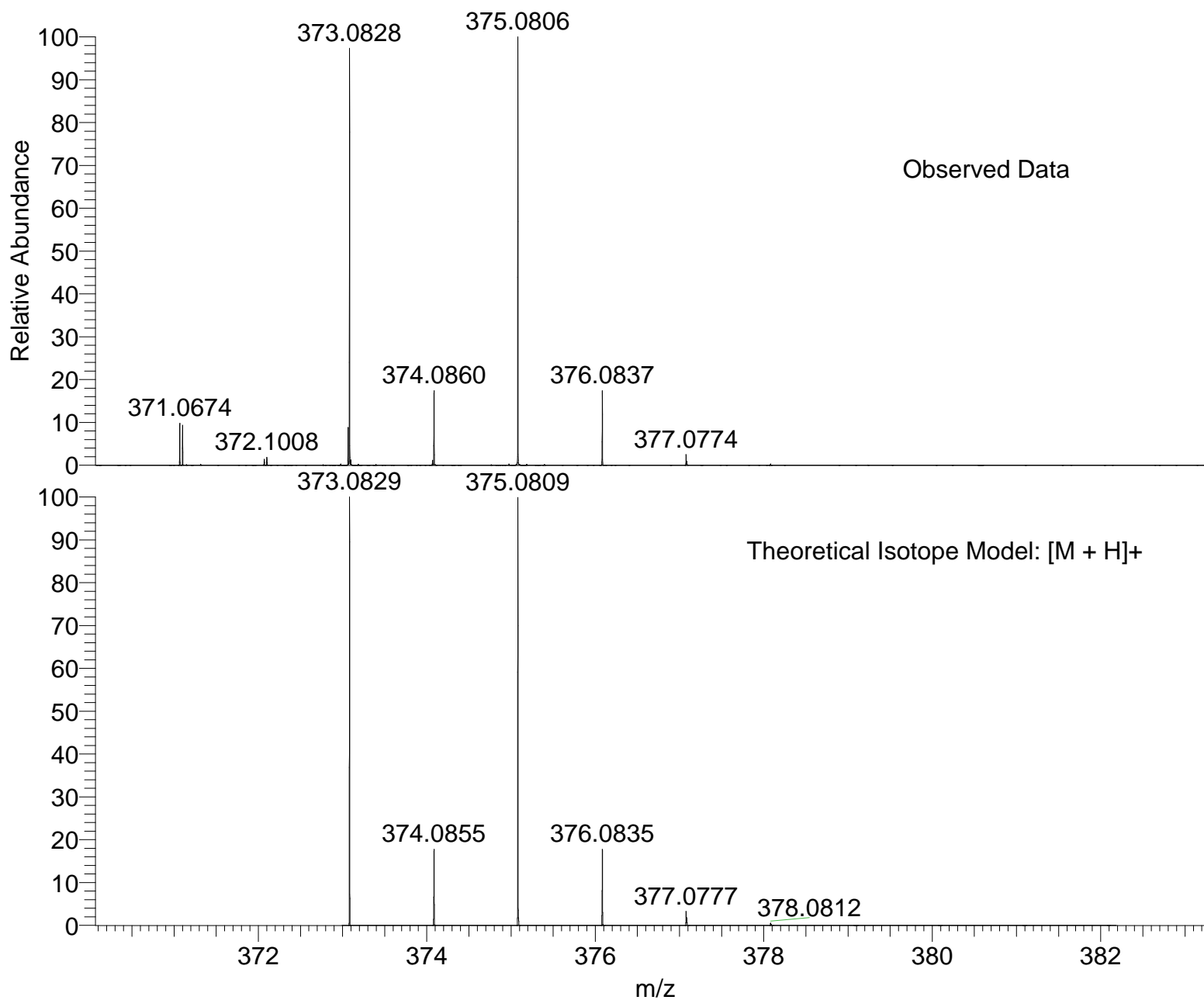
T: FTMS + p NSI Full ms [120.00-1935.00]



BATJAM_7LP4J_A #14-22 RT: 0.15-0.39 AV: 9 SM: 7G NL: 1.21E6

T: FTMS + p NSI Full ms [120.00-1935.00]





NL:
2.25E6
BATJAM_7LP4J_A#14-22 RT:
0.15-0.39 AV: 9 T: FTMS + p
NSI Full ms [120.00-1935.00]

NL:
9.14E3
C₁₆H₂₅BrO₃SiH:
C₁₆H₂₆Br₁O₃Si₁
p (gss, s /p:40) Chrg 1
R: 100000 Res .Pwr . @FWHM

Isotope: Min. .. Max.
 14 N 0....15
 16 O 0....15
 12 C 0....60
 1 H 0....70
 23 Na 0....0
 79 Br 0....1
 28 Si 0....5
 Tolerance Window: +- 5.00 ppm
 Db/Ring Equiv: -3.. 100
 Fits: 150

N-Rule: Do not use
 Charge: 1

Mass	Theoretical Mass	Delta [ppm]	RDB	Composition
373.0828	373.0828	-0.0	8.5	C ₅ H ₁₃ O ₃ N ₁₄ Si ₂
	373.0828	-0.0	3.0	C ₆ H ₁₉ O ₈ N ₇ Si ₂
	373.0828	-0.1	-2.5	C ₇ H ₂₅ O ₁₃ Si ₂
	373.0828	0.1	6.0	C ₁₃ H ₂₃ O ₆ N ₁ Si ₃
	373.0828	0.1	11.5	C ₁₂ H ₁₇ O ₁ N ₈ Si ₃
	373.0829	-0.3	4.5	C ₁₆ H ₂₆ O ₃ Br ₁ Si ₁
	373.0830	-0.4	7.0	C ₈ H ₁₆ N ₁₃ Br ₁
	373.0830	-0.4	1.5	C ₉ H ₂₂ O ₅ N ₆ Br ₁
	373.0832	-1.0	5.0	C ₁₂ H ₂₇ O ₃ N ₁ Si ₅
	373.0824	1.1	4.0	C ₇ H ₁₅ O ₁₁ N ₇
	373.0824	1.1	9.5	C ₆ H ₉ O ₆ N ₁₄
	373.0832	-1.1	7.5	C ₄ H ₁₇ N ₁₄ Si ₄
	373.0832	-1.1	2.0	C ₅ H ₂₃ O ₅ N ₇ Si ₄
	373.0832	-1.2	21.5	C ₂₂ H ₉ O ₁ N ₆
	373.0824	1.2	7.0	C ₁₄ H ₁₉ O ₉ N ₁ Si ₁
	373.0824	1.2	12.5	C ₁₃ H ₁₃ O ₄ N ₈ Si ₁
	373.0823	1.3	15.5	C ₂₀ H ₁₇ O ₂ N ₂ Si ₂
	373.0833	-1.4	3.5	C ₁₅ H ₃₀ Br ₁ Si ₃
	373.0834	-1.5	0.5	C ₈ H ₂₆ O ₂ N ₆ Br ₁ Si ₂
	373.0834	-1.6	-2.5	C ₁ H ₂₂ O ₄ N ₁₂ Br ₁ Si ₁
	373.0820	2.1	1.0	C ₆ H ₂₄ O ₁ N ₉ Br ₁ Si ₂
	373.0837	-2.4	17.5	C ₁₄ H ₉ N ₁₂ Si ₁
	373.0837	-2.4	12.0	C ₁₅ H ₁₅ O ₅ N ₅ Si ₁
	373.0819	2.4	16.5	C ₂₁ H ₁₃ O ₅ N ₂
	373.0819	2.4	22.0	C ₂₀ H ₇ N ₉
	373.0819	2.4	-3.0	C ₄ H ₂₇ O ₉ N ₃ Si ₄
	373.0819	2.5	2.5	C ₃ H ₂₁ O ₄ N ₁₀ Si ₄
	373.0837	-2.5	9.0	C ₈ H ₁₁ O ₇ N ₁₁
	373.0837	-2.5	3.5	C ₉ H ₁₇ O ₁₂ N ₄
	373.0818	2.6	5.5	C ₁₀ H ₂₅ O ₂ N ₄ Si ₅

Mass	Theoretical Mass	Delta [ppm]	RDB	Composition
	373.0816	3.2	2.0	C ₇ H ₂₀ O ₄ N ₉ Br ₁
	373.0816	3.3	5.0	C ₁₄ H ₂₄ O ₂ N ₃ Br ₁ Si ₁
	373.0841	-3.5	11.0	C ₁₄ H ₁₉ O ₂ N ₅ Si ₃
	373.0815	3.5	-2.0	C ₅ H ₂₃ O ₁₂ N ₃ Si ₂
	373.0815	3.6	3.5	C ₄ H ₁₇ O ₇ N ₁₀ Si ₂
	373.0842	-3.6	8.0	C ₇ H ₁₅ O ₄ N ₁₁ Si ₂
	373.0842	-3.6	2.5	C ₈ H ₂₁ O ₉ N ₄ Si ₂
	373.0814	3.7	6.5	C ₁₁ H ₂₁ O ₅ N ₄ Si ₃
	373.0814	3.7	12.0	C ₁₀ H ₁₅ N ₁₁ Si ₃
	373.0842	-3.8	-0.5	C ₁ H ₁₇ O ₁₁ N ₁₀ Si ₁
	373.0843	-4.0	6.5	C ₁₀ H ₁₈ O ₁ N ₁₀ Br ₁
	373.0843	-4.0	1.0	C ₁₁ H ₂₄ O ₆ N ₃ Br ₁
	373.0811	4.6	-1.0	C ₆ H ₁₉ O ₁₅ N ₃
	373.0811	4.7	4.5	C ₅ H ₁₃ O ₁₀ N ₁₀
	373.0846	-4.7	7.0	C ₆ H ₁₉ O ₁ N ₁₁ Si ₄
	373.0846	-4.7	1.5	C ₇ H ₂₅ O ₆ N ₄ Si ₄
	373.0846	-4.8	21.0	C ₂₄ H ₁₁ O ₂ N ₃
	373.0810	4.8	7.5	C ₁₂ H ₁₇ O ₈ N ₄ Si ₁
	373.0810	4.8	13.0	C ₁₁ H ₁₁ O ₃ N ₁₁ Si ₁
	373.0846	-4.9	-1.5	H ₂₁ O ₈ N ₁₀ Si ₃
	373.0810	4.9	16.0	C ₁₈ H ₁₅ O ₁ N ₅ Si ₂

Mass	Theoretical Mass	Delta [ppm]	RDB	Composition
------	---------------------	----------------	-----	-------------

Mass	Theoretical Mass	Delta [ppm]	RDB	Composition
------	---------------------	----------------	-----	-------------